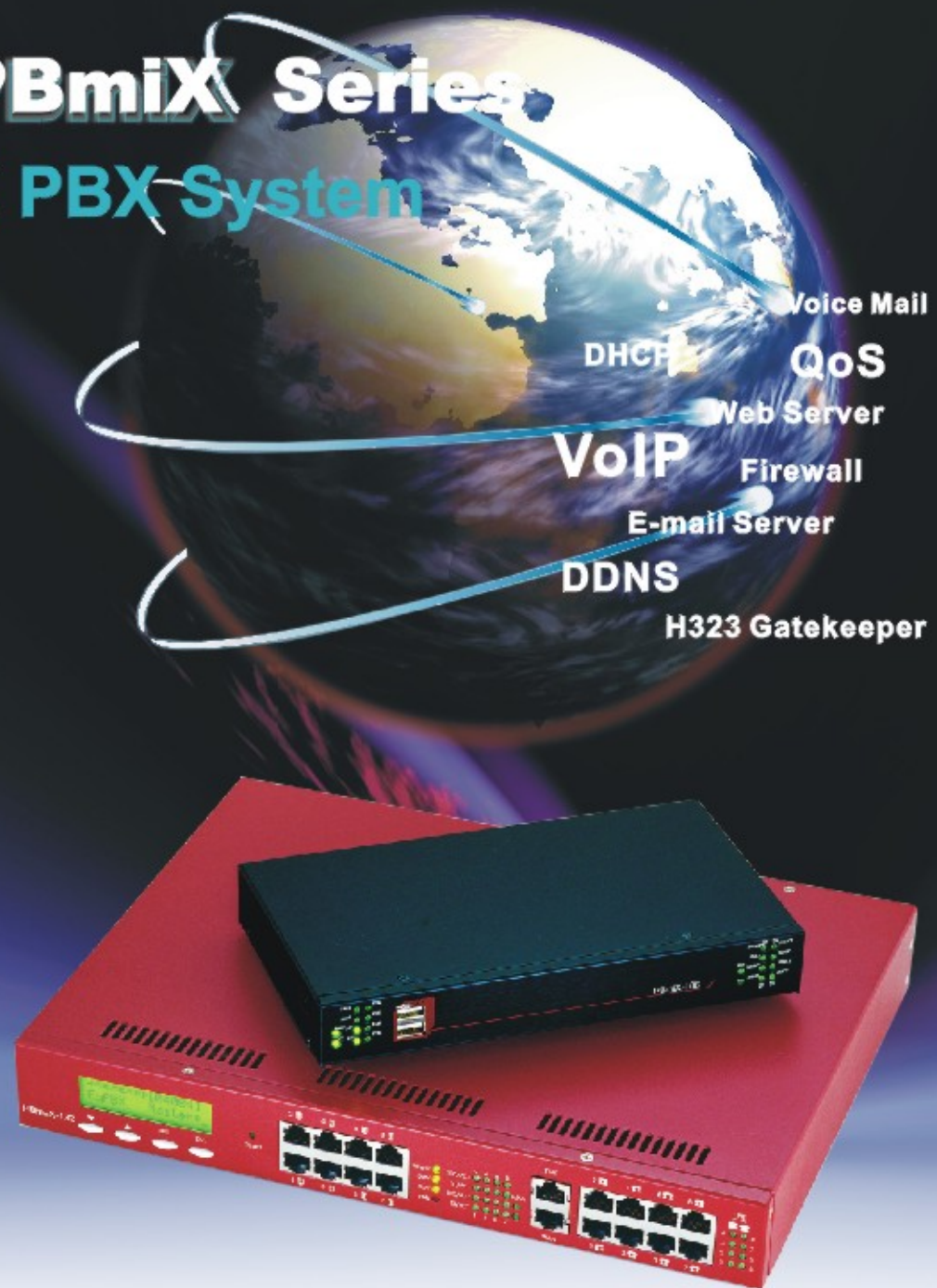


# **PBmaX/PBmiX Series**

## **IP-Enabled PBX System**



As broadband networking marches into the 21<sup>st</sup> century with ever increasing popularity, it also takes telecommunications to a new, higher level where VoIP and distributed PBX architecture are now the next wave of revolution since the introduction of auto attendant and voicemail. In this critical times of transition, Eletech proudly introduces the PBmaX/PBmiX series of IP-Enabled PBX systems. Based on state-of-the-art embedded platforms with proven Linux core technology, these systems provide not only a highly versatile and integrated telecom solution, but also network services such as built-in router, firewall, DHCP server, Internet sharing, gatekeeper, VPN and etc. Available with such powerful functions at reasonable prices, these trendsetting devices will doubtlessly bring new meanings to telecommunication into enterprises, SOHOs and homes alike.

## Benefits of Distributed Architecture

- Improves VoIP quality with QoS (Quality of Service) support
- Connects multiple locations together via VoIP channels
- Remote extensions can be called as if they were local extensions
- Allows going off-net via an remote extension and calling a PSTN number
- Connects two or more PBmaX's under intranet environment and makes them act as if they are one PBmaX
- Great for companies with branch offices, franchised stores, SOHOs and homes

## Feature Comparisons

Feature	Traditional PBX	PBmaX/PBmiX
Auto Attendant	Optional	Standard
Voicemail	Optional	Standard
Call Forwarding	Standard	Standard
Directed Call Pickup	Standard	Standard
Conference Call	Standard	Standard
Personal Code	Standard	Standard
Speed Dial	Standard	Standard
Toll Restriction	—	Standard
Call Recording	Optional	Standard
Call Details Logging	—	Standard
Networking Capability	—	Standard
VoIP Gateway	Optional	Standard
Distributed Architecture	No	Yes
Internet Sharing	—	Standard
Management Tool	Console/Phone	Web Browser
Firmware Upgrade	—	Remote Download
Embedded Platform	—	Yes
System OS	—	Linux
Switching Method	Matrix	PCM Bus
Backup Power	Rechargeable Battery	External UPS



## PBmaX/PBmiX System Specifications

### PBmaX-132

Max. Number of Analog Ports	32 , Flexible Port Assignment
Number of CO Ports	Flexible, Expandable with 4-port module
Number of Extension Ports	Flexible, Expandable with 4-port module
Number of VoIP Ports	4 or 8
Interface Connector	RJ-45
CPU	Power PC / 200MHz
System Core	Linux based, upgradable via web download
LCD Panel	16 Characters x 2 Lines
Power Consumption	100-240VAC, 65Watts
Dimensions (L x H x W)	340mm x 44mm x 260mm
Temperature range	Storage: -10°C ~ 70°C , Operating: 0°C ~ 50°C

### PBmiX-106

Max. Number of Analog Ports	6
Number of CO Ports	2
Number of Extension Ports	4
Number of VoIP Ports	2 or 4
Interface Connector	RJ-11
CPU	ARM920T / 200MHz
System Core	Linux based, upgradable via web download
USB Ports	USB 1.1
Power Consumption	12 VDC, 24 Watts via AC/DC adaptor
Dimensions (L x H x W)	215mm x 30mm x 132mm
Temperature range	Storage: -10°C ~ 70°C , Operating: 0°C ~ 50°C

### Network Related Specifications

- Network Interface 10/100 Base-T auto-negotiation
- LAN Interface 10/100 Mbps RJ-45 LAN port (switch)  
PBmaX : 8 (w/ IP Sharing)  
PBmiX : 4 (w/ IP Sharing)
- WAN Interface 10/100 Mbps RJ-45 Ethernet
- Speech Compression G.723 / G.729
- VoIP Standard H.323 , SIP (Q4 2004)
- Silence Suppression Supported with CNG  
(Comfort Noise Generation)
- Echo Cancellation G.165 / G.168 25ms
- Adaptive Jitter Buffer Yes
- Gain Control In/Out +/- 6db



## Telecom Functions & Network Capabilities

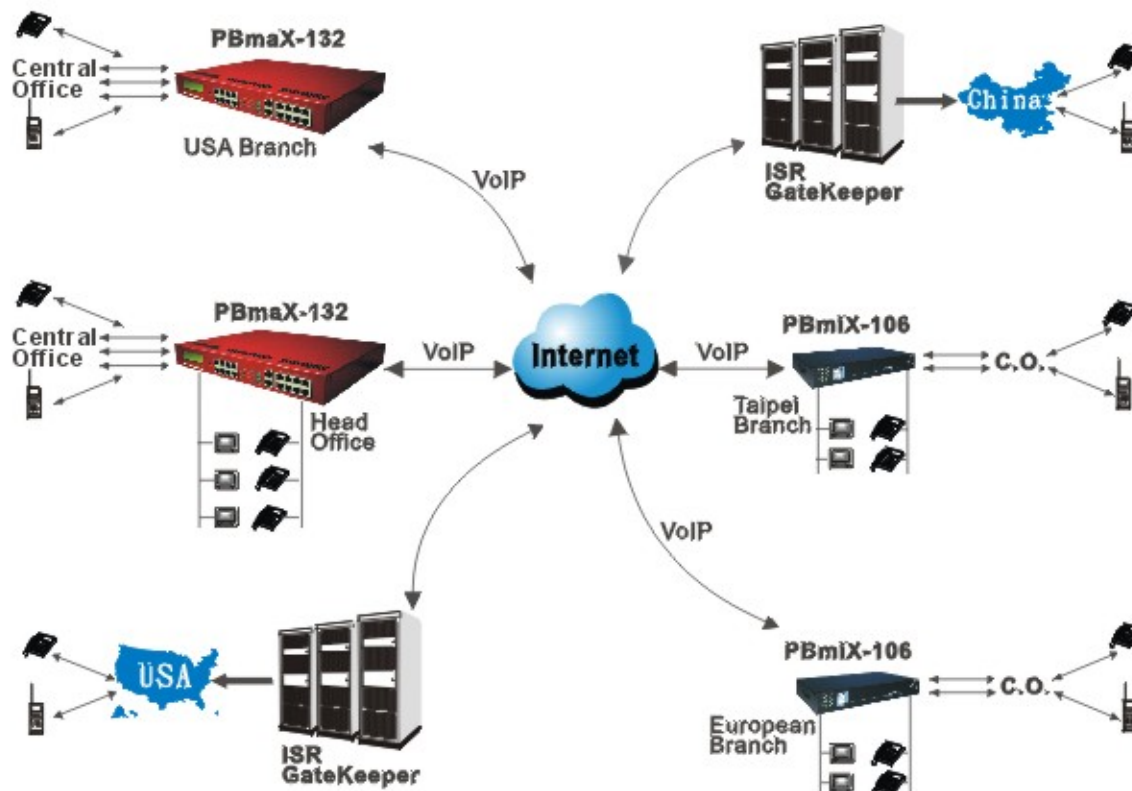
- Auto Attendant
- Voicemail
- QoS Server
- Dynamic Domain Name Server
- Microsoft Netmeeting Support
- NAT (Network Address Translation)
- Firewall
- DHCP Server
- VPN

### Options

- SmartPhone Software
- E-mail Server
- Web Server / My SQL
- H.323 Gatekeeper



## PBmaX/PBmIX System Network Configuration



ISO 9001 : 2000 Registered

**ELETECH**  
www.eletech.com

**Eletech Ent. Co., LTD**  
3/F No.531 Chung-cheng Rd.  
Hsin Tien, Taipei Hsien, Taiwan  
TEL: 886-2-2218-0068(Rep.)  
FAX: 886-2-2218-0254  
E-mail: eletech@ms2.hinet.net

**Eletech Electronics**  
16025 Kaplan Avenue,  
Industry CA 91744, U.S.A.  
TEL: (626) 333-6394  
FAX: (626) 333-6494  
E-mail: info@eletech.com